



Priced From

# \$156,990

3 Exterior Styles Available

 1,267+ Sq. Ft.

 3 Bedrooms

 2 Bathrooms

Imagine yourself relaxing in this wonderful split floor plan perfectly crafted for those who love to entertain. The open layout is bright and welcoming which invites you to easily flow from one space into the next. Large windows and vaulted ceiling in the great room allow plenty of natural light to illuminate the rooms with trendy flooring for a modern-day look and feel.

The heart of the layout is the kitchen, where those who love to cook will discover a large pantry to store all those comfort food ingredients. The pantry is also connected to the laundry room which makes it easy to multitask on your busy schedule. The kitchen overlooks both the cozy great room and the dining space, perfect for when you're hosting friends for a casual dinner. A sliding door opens out to the backyard where you can step into the sunshine and relish the peace and privacy as you share a meal with your family or simply start your day with a hot coffee in hand.



Farmhouse

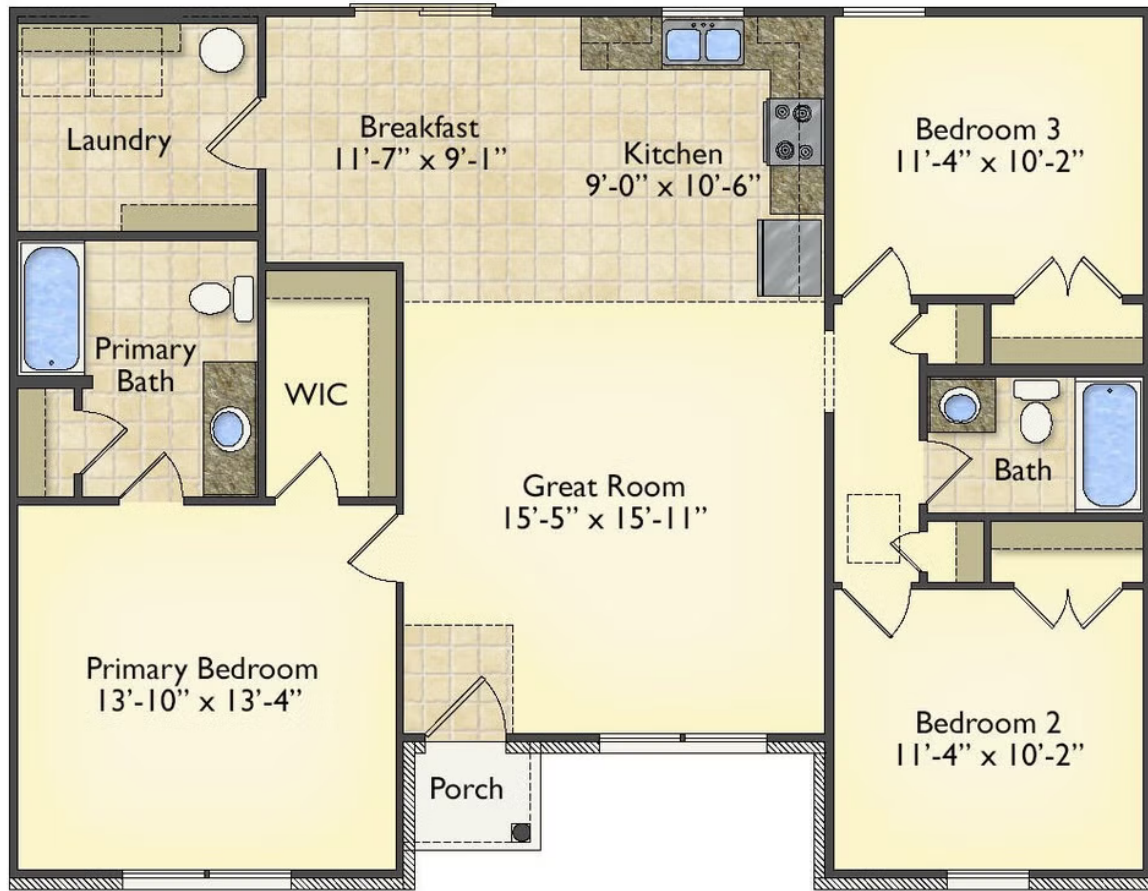


Classic



Craftsman

All square footage is approximate. Renderings are artist's conceptions and may vary slightly from the actual home. Homes may be built in reverse of plans shown, depending on site conditions. Minor architectural changes may be made occasionally at the option of the builder. Please contact your Sales Consultant for details.



All square footage is approximate. Renderings are artist's conceptions and may vary slightly from the actual home. Homes may be built in reverse of plans shown, depending on site conditions. Minor architectural changes may be made occasionally at the option of the builder. Please contact your Sales Consultant for details.