




Priced From

# \$227,990

3 Exterior Styles Available

 1,877+ Sq. Ft.

 4 Bedrooms

 2 Bathrooms

 2 Car Garage

The Richfield has something for everyone! This lovely home offers 4 bedrooms and 2 baths with endless options to create your dream home. The openness of the Kitchen with large island, breakfast nook, and family room was specifically designed to keep everyone together. Savor relaxed yet special meals in your formal dining room or reinvent the space into a 5th bedroom for those out of town guests. The master retreat complete with a walk in closet is secluded from the other three bedrooms for privacy. A shortage of storage space is a problem of the past with walk in closets in each of the 4 bedrooms in this home. A covered front porch, 2 car garage, and separate laundry room are just a few of the reasons to make the Richfield your very own dream home.



Classic



Craftsman

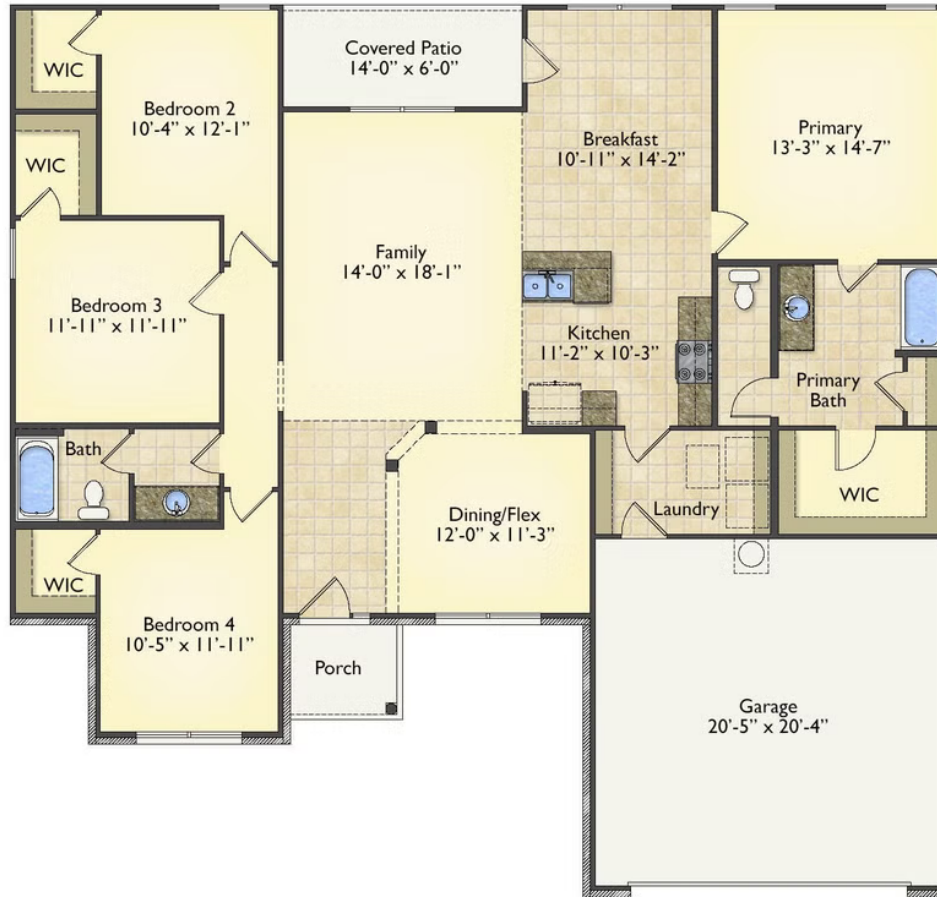


Farmhouse

All square footage is approximate. Renderings are artist's conceptions and may vary slightly from the actual home. Homes may be built in reverse of plans shown, depending on site conditions. Minor architectural changes may be made occasionally at the option of the builder. Please contact your Sales Consultant for details.

# Richfield

## Bertie



All square footage is approximate. Renderings are artist's conceptions and may vary slightly from the actual home. Homes may be built in reverse of plans shown, depending on site conditions. Minor architectural changes may be made occasionally at the option of the builder. Please contact your Sales Consultant for details.