




Priced From

\$249,990

5 Exterior Styles Available

 2,054+ Sq. Ft.

 4 Bedrooms

 2 Bathrooms

 2 Car Garage

Welcome home to the Lexington where timeless elegance, contemporary Southern comfort and flexibility are perfectly combined. This popular plan is designed for laid-back living, and provides space to work from home, room to accommodate in-laws and entertain guests and it could all be yours.

Imagine gathering with loved ones in the light-filled and spacious family room in an open design that embraces the kitchen and breakfast room. The gourmet kitchen is ready to be customized to suit your needs, plus there's a formal dining room and a covered patio with the freedom to expand and create your dream home.

At the end of the day, you can retire to your private primary suite with a walk-in closet and a primary bath. The three secondary bedrooms have generous closets and there's a central full bath for added convenience. Completing this sensational 2,054 sqft plan is a large laundry room, a flex room which could be your dream study, guest suite or playroom, the choice is all yours when it comes to the



Classic

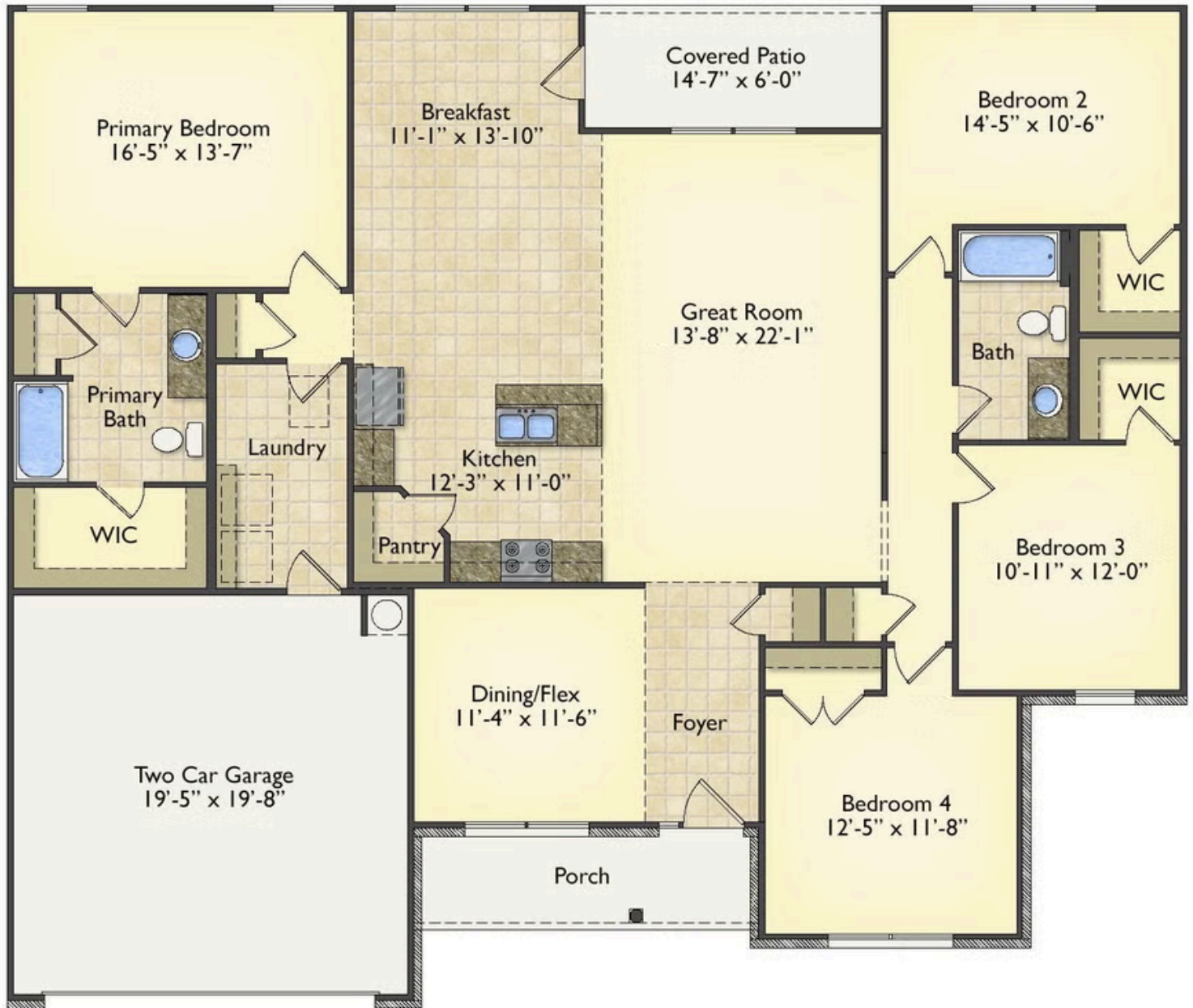


Craftsman



Brick

All square footage is approximate. Renderings are artist's conceptions and may vary slightly from the actual home. Homes may be built in reverse of plans shown, depending on site conditions. Minor architectural changes may be made occasionally at the option of the builder. Please contact your Sales Consultant for details.



All square footage is approximate. Renderings are artist's conceptions and may vary slightly from the actual home. Homes may be built in reverse of plans shown, depending on site conditions. Minor architectural changes may be made occasionally at the option of the builder. Please contact your Sales Consultant for details.