




Priced From

# \$150,990

2 Exterior Styles Available

 1,176+ Sq. Ft.

 3 Bedrooms

 2 Bathrooms

The Aspen is a cozy, one-story plan with an open layout that is bright and welcoming and invites you to easily flow from one space into the next. This plan offers 3 bedrooms and 2 full baths with a spacious great room that opens up to the eat-in kitchen. Personalize this plan to turn this kitchen into your own luxury kitchen perfect for entertaining. You can even add a garage, or a covered porch to wake up and watch the sunrise with a cup of joe. With endless opportunities, you can turn this versatile plan into your own dream home.

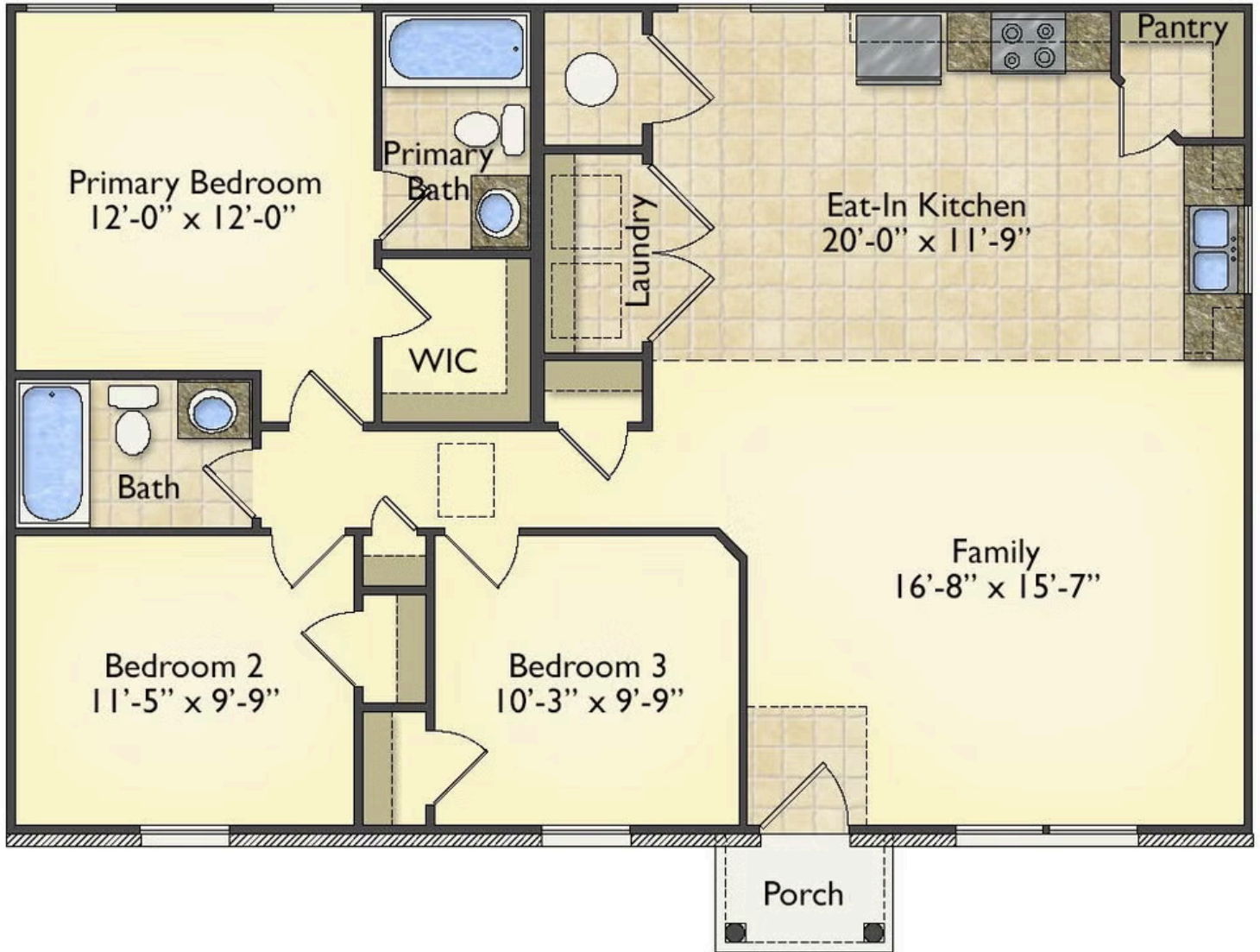


Craftsman



Classic

All square footage is approximate. Renderings are artist's conceptions and may vary slightly from the actual home. Homes may be built in reverse of plans shown, depending on site conditions. Minor architectural changes may be made occasionally at the option of the builder. Please contact your Sales Consultant for details.



All square footage is approximate. Renderings are artist's conceptions and may vary slightly from the actual home. Homes may be built in reverse of plans shown, depending on site conditions. Minor architectural changes may be made occasionally at the option of the builder. Please contact your Sales Consultant for details.