




Priced From
\$244,990

5 Exterior Styles Available

 **2,054+ Sq. Ft.**

 **4 Bedrooms**

 **2 Bathrooms**

 **2 Car Garage**

Welcome home to the Lexington where timeless elegance, contemporary Southern comfort and flexibility are perfectly combined. This popular plan is designed for laid-back living, and provides space to work from home, room to accommodate in-laws and entertain guests and it could all be yours.

Imagine gathering with loved ones in the light-filled and spacious family room in an open design that embraces the kitchen and breakfast room. The gourmet kitchen is ready to be customized to suit your needs, plus there's a formal dining room and a covered patio with the freedom to expand and create your dream home.

At the end of the day, you can retire to your private primary suite with a walk-in closet and a primary



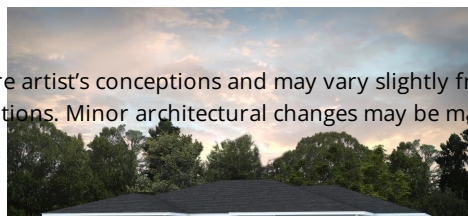
Brick



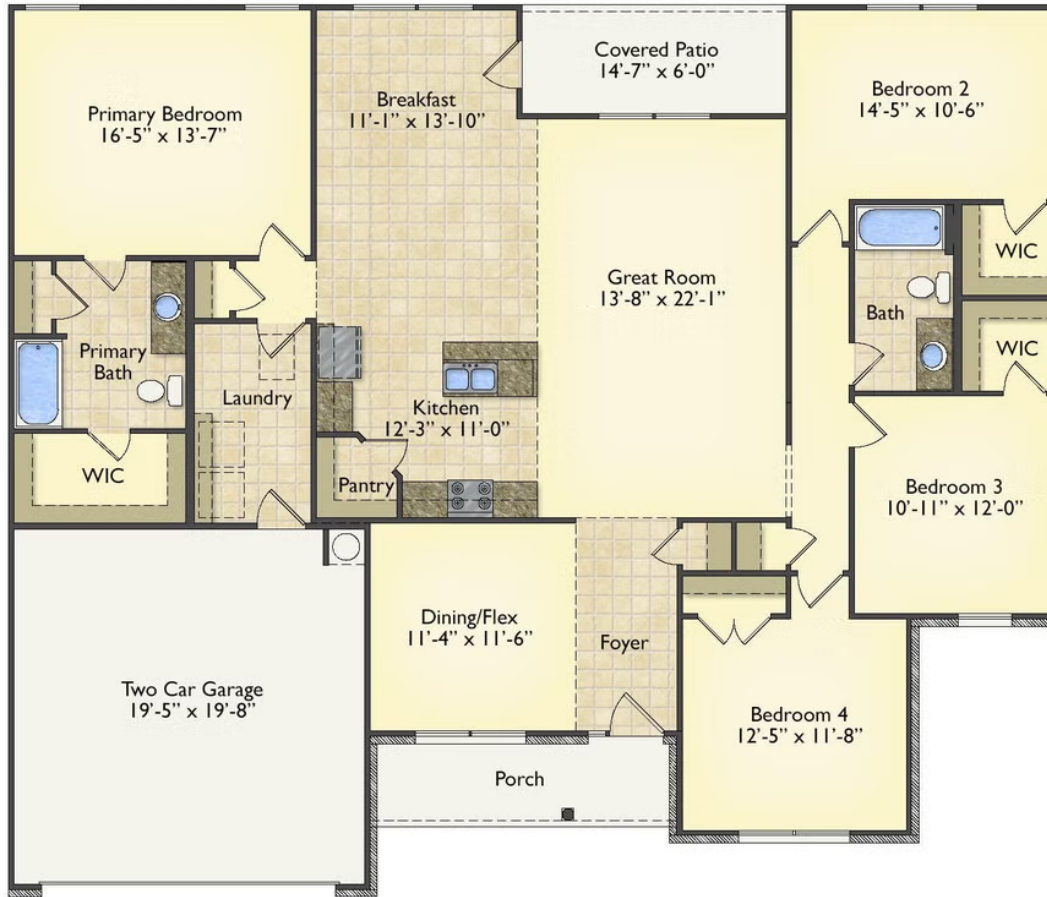
Classic



Craftsman



All square footage is approximate. Renderings are artist's conceptions and may vary slightly from the actual home. Homes may be built in reverse of plans shown, depending on site conditions. Minor architectural changes may be made occasionally at the option of the builder. Please contact your Sales Consultant for details.



All square footage is approximate. Renderings are artist's conceptions and may vary slightly from the actual home. Homes may be built in reverse of plans shown, depending on site conditions. Minor architectural changes may be made occasionally at the option of the builder. Please contact your Sales Consultant for details.