




Call for Price

3 Exterior Styles Available

 1,988+ Sq. Ft.

 3 Bedrooms

 2.5 Bathrooms

The Beaufort is a spectacular plan for those who are looking for elegance and comfort. From the high ceilings and open layout design to the abundance of natural light, no detail has been overlooked in the creation of this stunning home. Everyday life is sure to revolve around the open kitchen, dining, and great room. Here you can gather with loved ones and host guests as you cook up a nice comfort food meal in the large gourmet kitchen with an island is a perfect for gathering family and friends.

The layout extends to the second-floor bonus room which could be used to fit any of your needs, whether you're envisioning a home office, a playroom or a second living area. There is plenty of space for everyone to spread out and relax with three spacious bedrooms and 2.5 baths. At the end of your day, you can retire to your luxe primary suite with your large private bath that includes a shower/tub combo. As you might expect, the list of extra features is long and impressive. Add a covered front porch to enjoy time outdoors with a refreshing glass of lemonade! The options are endless with The Beaufort.



Cabin

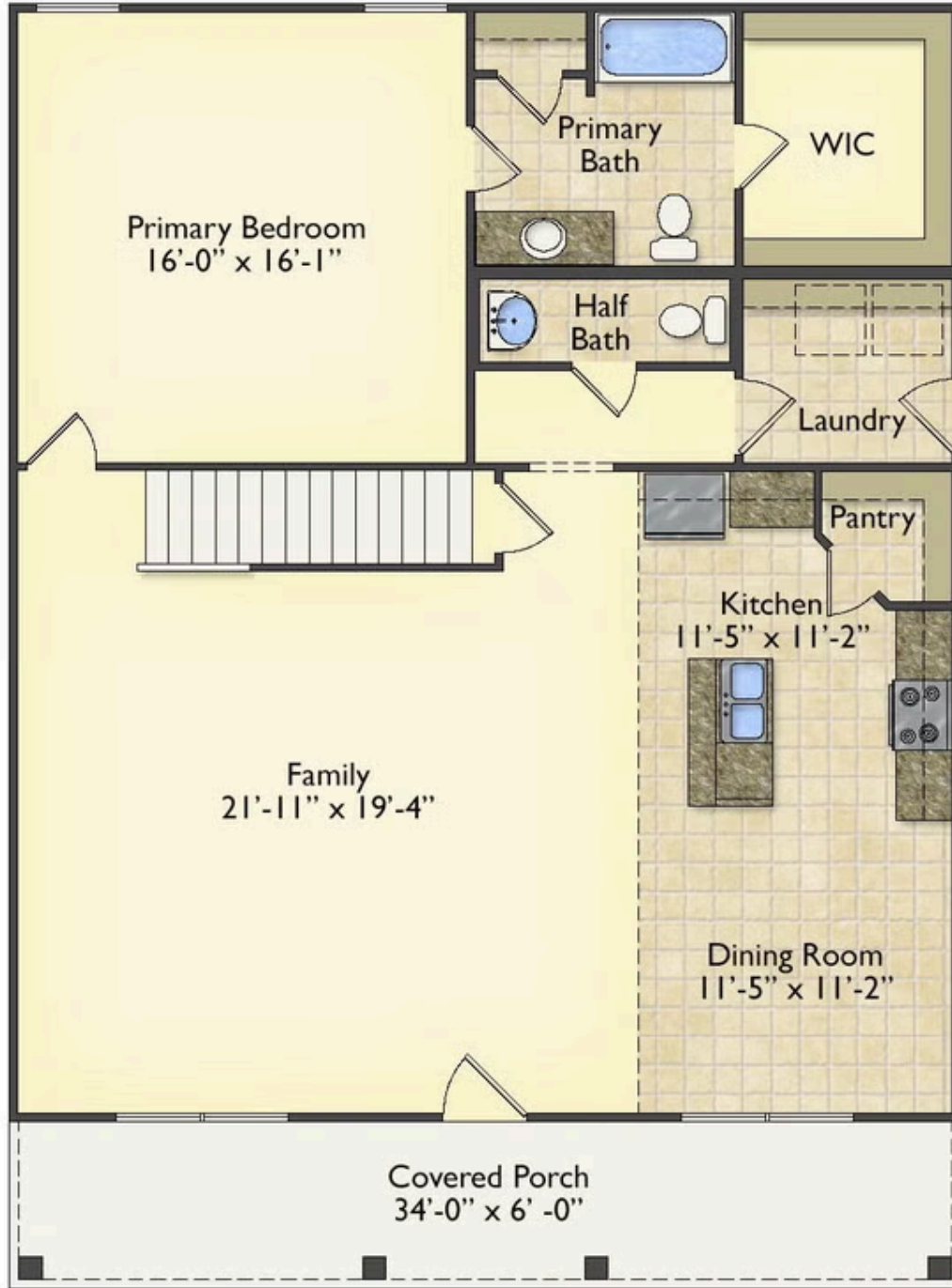


Cape Cod



Classic

All square footage is approximate. Renderings are artist's conceptions and may vary slightly from the actual home. Homes may be built in reverse of plans shown, depending on site conditions. Minor architectural changes may be made occasionally at the option of the builder. Please contact your Sales Consultant for details.



All square footage is approximate. Renderings are artist's conceptions and may vary slightly from the actual home. Homes may be built in reverse of plans shown, depending on site conditions. Minor architectural changes may be made occasionally at the option of the builder. Please contact your Sales Consultant for details.

