




Priced From

# \$259,990

2 Exterior Styles Available

 2,357+ Sq. Ft.

 4 Bedrooms

 2.5 Bathrooms

 2 Car Garage

The Montclair was designed with today's busy lifestyle in mind. Wide open living keeps the conversation flowing with a spacious great room open to the eating area and kitchen with plenty of cooking and counter space. A large utility room off the garage keeps the mess in check with a convenient powder room across the hall. After a long day relax and rejuvenate in your large primary suite with primary bath and enough closet space for all of your shoes and his baseball hat collection. The upstairs loft area is the perfect spot for family game night or just a quiet space to finish a book. The best home is the one you don't ever want to leave.



Classic

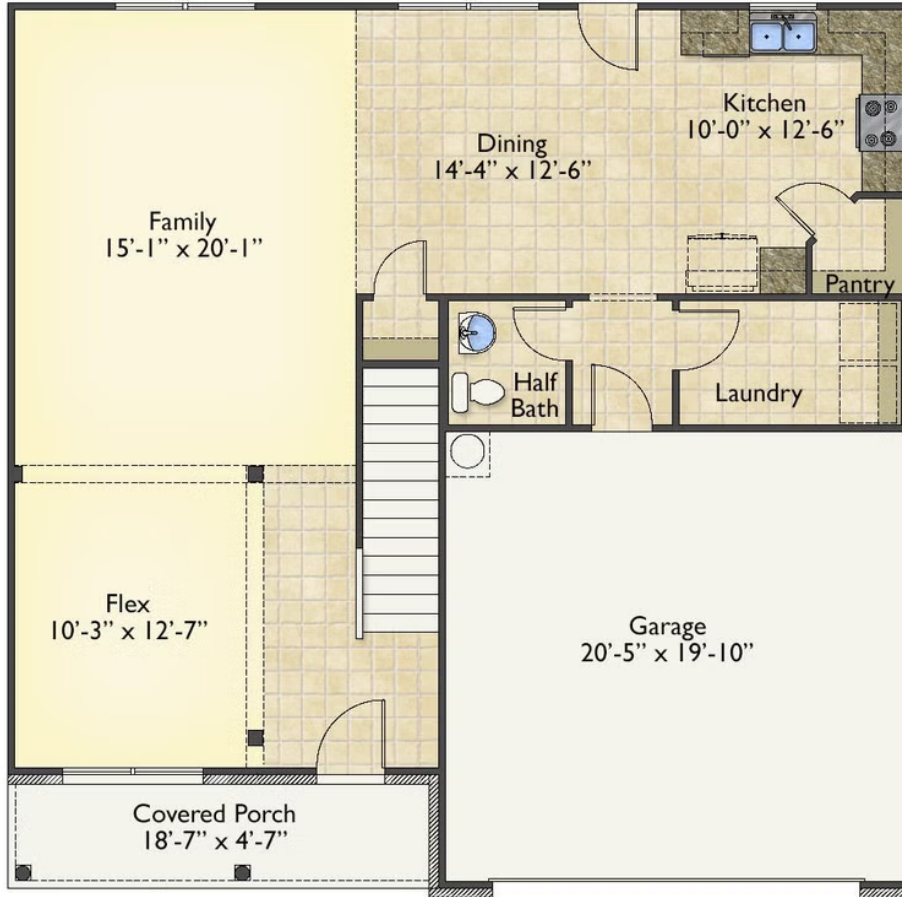


Craftsman

All square footage is approximate. Renderings are artist's conceptions and may vary slightly from the actual home. Homes may be built in reverse of plans shown, depending on site conditions. Minor architectural changes may be made occasionally at the option of the builder. Please contact your Sales Consultant for details.

# Montclair

Pitt



All square footage is approximate. Renderings are artist's conceptions and may vary slightly from the actual home. Homes may be built in reverse of plans shown, depending on site conditions. Minor architectural changes may be made occasionally at the option of the builder. Please contact your Sales Consultant for details.



All square footage is approximate. Renderings are artist's conceptions and may vary slightly from the actual home. Homes may be built in reverse of plans shown, depending on site conditions. Minor architectural changes may be made occasionally at the option of the builder. Please contact your Sales Consultant for details.