




Priced From

# \$334,990

2 Exterior Styles Available

 3,202+ Sq. Ft.

 5 Bedrooms

 2.5 Bathrooms

 2 Car Garage

Welcome home to the Arlington! This incredible two-story offers 5 bedrooms and 2.5 baths with endless options for you to create your own dream home! The first floor primary suite has become a popular feature as home owners prepare to build their forever home, the Arlington has that option for you! Create the perfect space with an optional dual primary suite on the second floor! Make a delicious Sunday brunch in your dream kitchen with a generous pantry and have the family gather around the kitchen island! Your utility room is conveniently located upstairs for added convenience! The open layout features a large upstairs loft that can be customized to be a reading area, second great room, or play room! Make your vision come true with the Arlington!



Classic

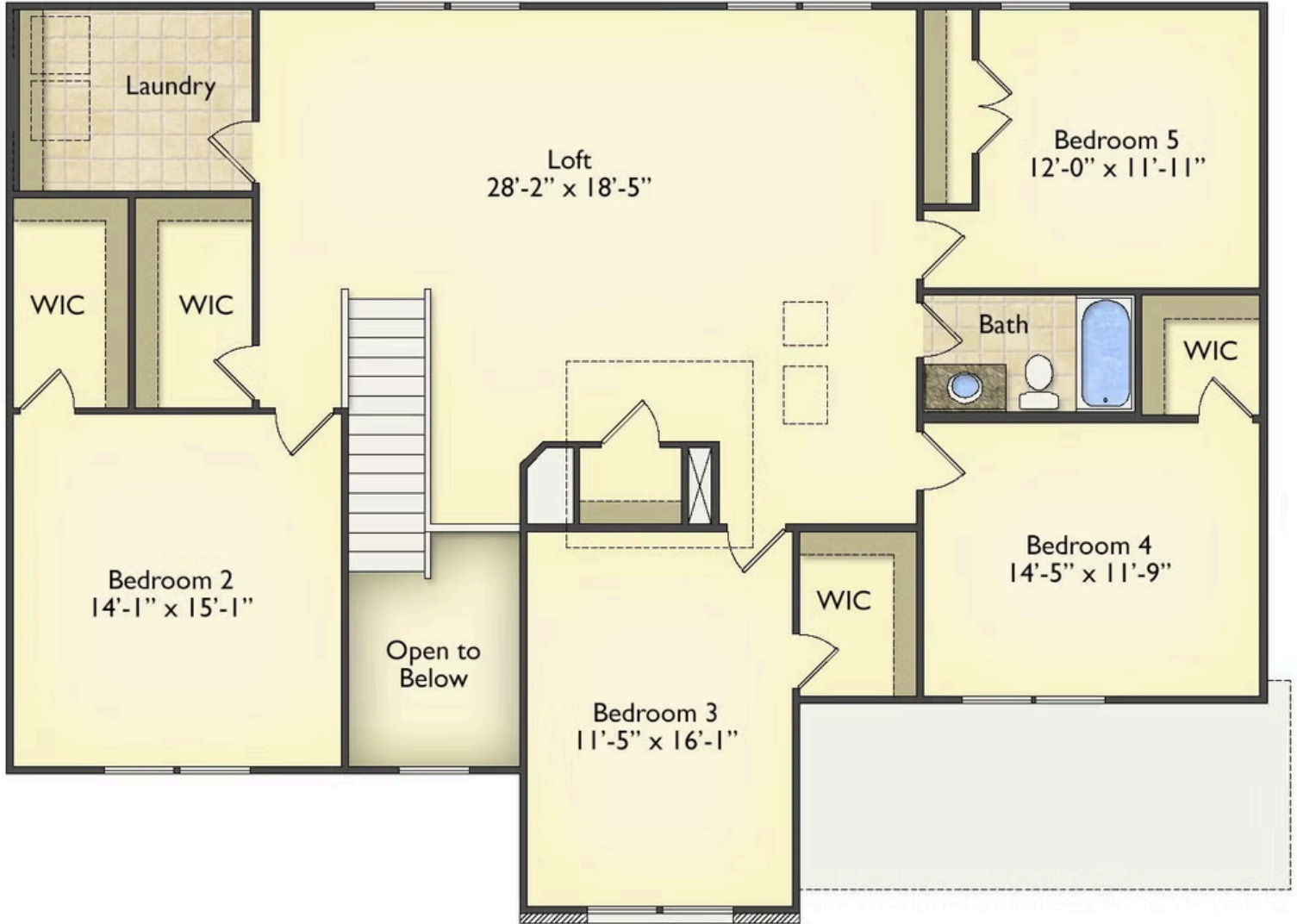


Craftsman

All square footage is approximate. Renderings are artist's conceptions and may vary slightly from the actual home. Homes may be built in reverse of plans shown, depending on site conditions. Minor architectural changes may be made occasionally at the option of the builder. Please contact your Sales Consultant for details.



All square footage is approximate. Renderings are artist's conceptions and may vary slightly from the actual home. Homes may be built in reverse of plans shown, depending on site conditions. Minor architectural changes may be made occasionally at the option of the builder. Please contact your Sales Consultant for details.



All square footage is approximate. Renderings are artist's conceptions and may vary slightly from the actual home. Homes may be built in reverse of plans shown, depending on site conditions. Minor architectural changes may be made occasionally at the option of the builder. Please contact your Sales Consultant for details.