



Call for Price

1 Exterior Styles Available

 **1,400+ Sq. Ft.**

 **2 Bedrooms**

 **2 Bathrooms**

 **2 Car Garage**

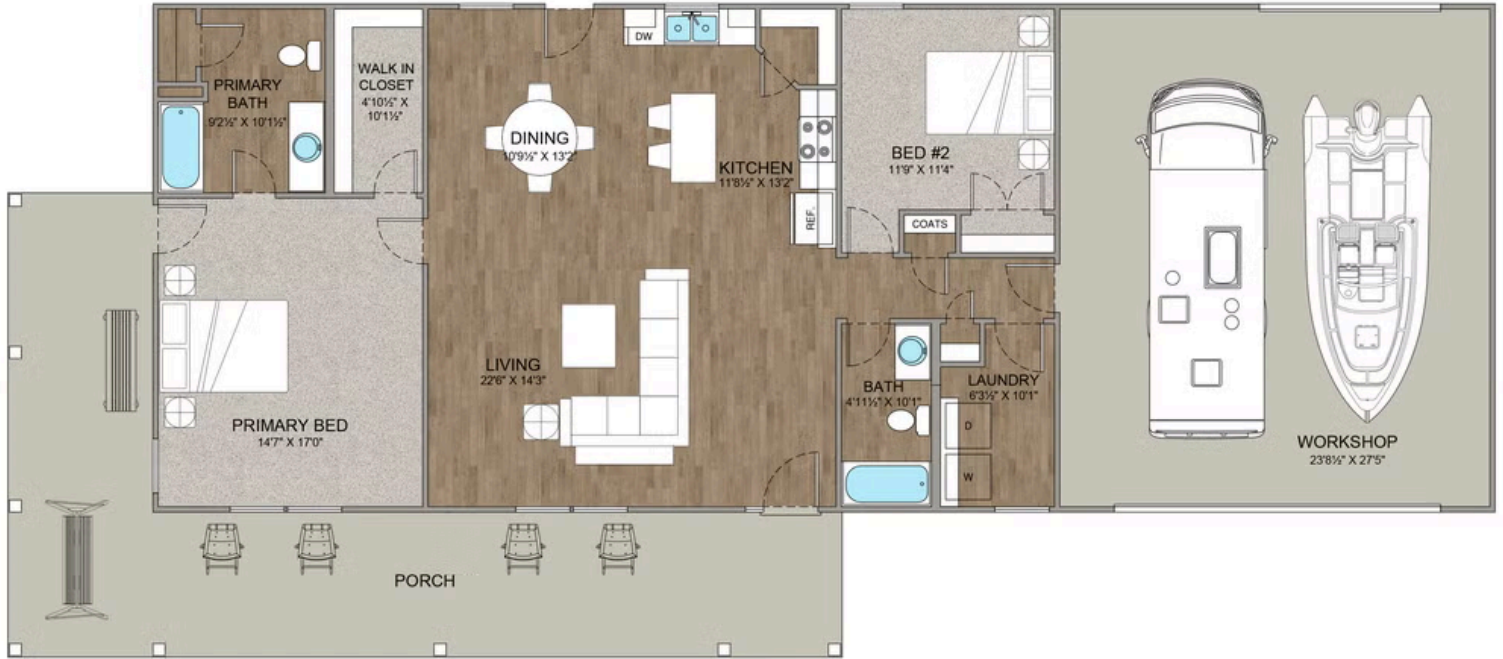
The Mustang Ranch is a beautiful barndominium offering 1,400 square feet of heated living space, complete with 2 bedrooms and 2 bathrooms. The open-concept layout connects the living, dining, and kitchen areas, creating a warm and inviting space perfect for family time and entertaining. The soaring 12-foot ceilings enhance the home's spaciousness and charm. The home portion of this barndominium is part of our Design By U series, meaning that the home's floorplan can be easily modified with additional bedrooms and bathrooms, depending on you and your family's needs. One of the standout features of the Mustang Ranch is its 24' x 28' workspace/garage with an 18' wide door. The 18' door is also 10' high to accommodate a farm tractor, boat or most RV's and it has a 10'x10' garage door on the backside of the space for drive-thru capability!. The ceilings in the workspace/garage are 12' high. Another lifestyle plus is its stunning wraparound porch, offering 509 square feet of outdoor living space. This expansive porch is perfect for relaxing, entertaining, or simply taking in the beauty of your surroundings. With its blend of practicality and style, the Mustang Ranch is an ideal choice for those dreaming of a cozy and functional home. Home plan photo may



All square footage is approximate. Renderings are artist's conceptions and may vary slightly from the actual home. Homes may be built in reverse of plans shown, depending on site conditions. Minor architectural changes may be made occasionally at the option of the builder. Please contact your Sales Consultant for details.

Mustang Ranch Barndominium

Sampson



All square footage is approximate. Renderings are artist's conceptions and may vary slightly from the actual home. Homes may be built in reverse of plans shown, depending on site conditions. Minor architectural changes may be made occasionally at the option of the builder. Please contact your Sales Consultant for details.