




Priced From

**\$232,990**

**1 Exterior Styles Available**

 **1,704+ Sq. Ft.**

 **4 Bedrooms**

 **2 Bathrooms**

 **2 Car Garage**

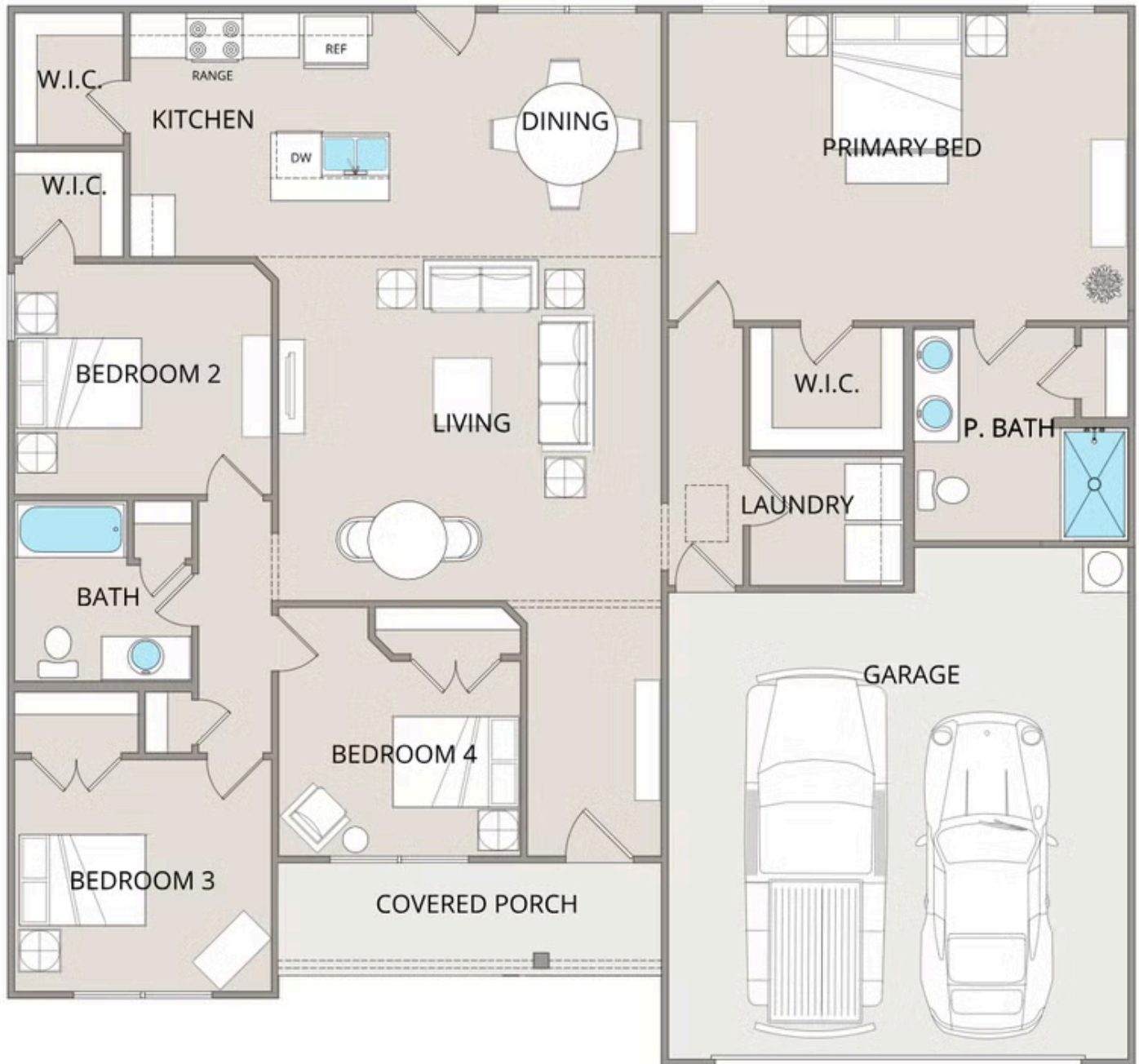
The Fountain combines modern elegance with relaxed living, offering a thoughtfully designed space that's ideal for entertaining or simply unwinding. With four bedrooms and two bathrooms, this home provides both flexibility and functionality to fit your lifestyle.

Designed with privacy in mind, the split-bedroom layout ensures a quiet retreat in the spacious primary suite, complete with a luxurious en-suite bathroom and walk-in closet. The open-concept kitchen flows seamlessly into the dining area and great room, creating a welcoming space perfect for gatherings or quiet nights in. With upgraded cabinetry, granite countertops, stainless steel appliances, and a sleek pull-out faucet, the kitchen is both stylish and practical.

For those who love outdoor living, the option to add a covered porch offers the perfect spot to sip coffee in the morning or relax at the end of the day. The fourth bedroom can easily be transformed into a home office, study, or playroom, giving you the flexibility to adapt the space to your needs.



All square footage is approximate. Renderings are artist's conceptions and may vary slightly from the actual home. Homes may be built in reverse of plans shown, depending on site conditions. Minor architectural changes may be made occasionally at the option of the builder. Please contact your Sales Consultant for details.



All square footage is approximate. Renderings are artist's conceptions and may vary slightly from the actual home. Homes may be built in reverse of plans shown, depending on site conditions. Minor architectural changes may be made occasionally at the option of the builder. Please contact your Sales Consultant for details.