




Priced From

\$108,990**7 Exterior Styles Available** **768+ Sq. Ft.** **1 - 2 Bedrooms** **1 Bathrooms**

A warm welcome to the "Avery" floorplan: a cozy yet functional living space perfect for individuals or small families. With 768 square feet, it offers flexibility with either one or two bedrooms and one bathroom, making it suitable for various lifestyles.

Upon entering, you'll find yourself in an open-concept kitchen and family room, where natural light pours in, creating an inviting atmosphere. The kitchen is equipped with modern amenities and ample counter space, ideal for both cooking and entertaining.

Tucked away at the back of the house is the bedroom, strategically placed to maximize space and privacy. The primary bedroom boasts a spacious walk-in closet, providing plenty of storage for your belongings.

Convenience is key in the Avery floorplan, as it includes a dedicated laundry room, making chores a breeze. Whether you're starting your day or winding down in the evening, this



Farmhouse

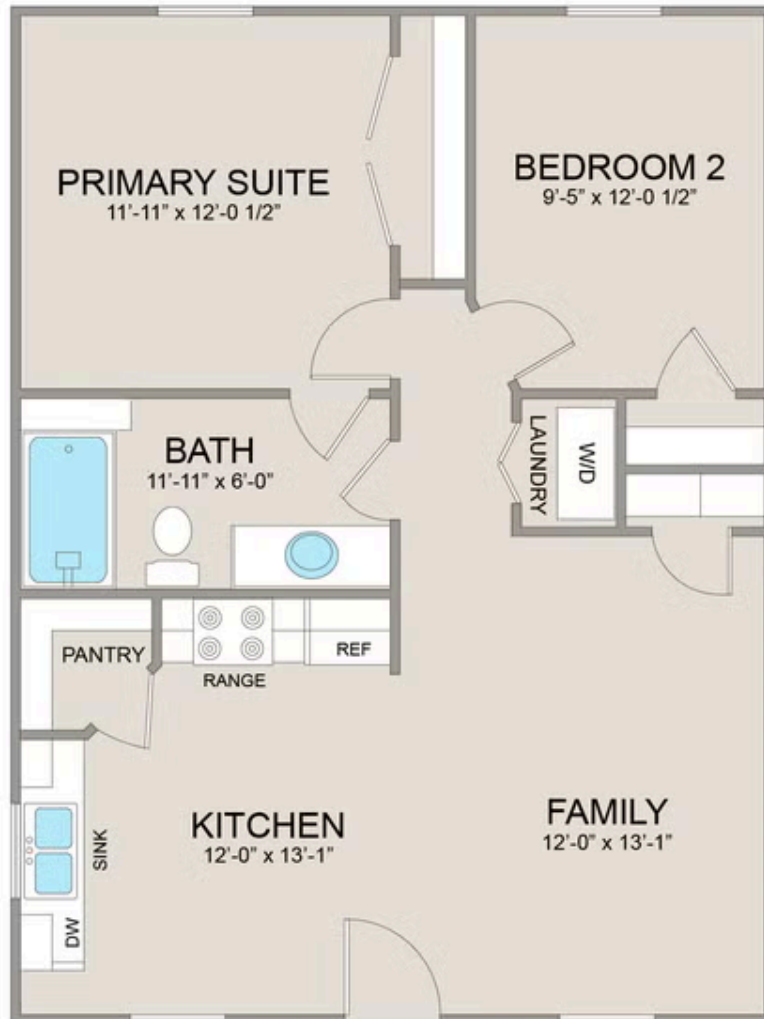


Classic

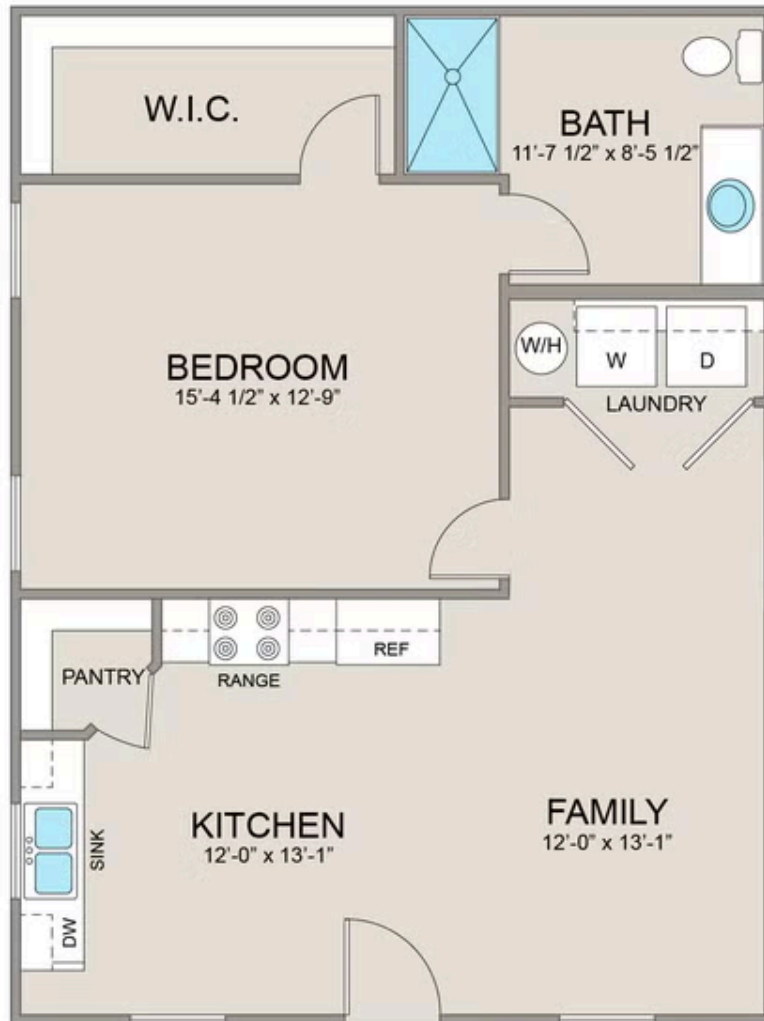


Modern

All square footage is approximate. Renderings are artist's conceptions and may vary slightly from the actual home. Homes may be built in reverse of plans shown, depending on site conditions. Minor architectural changes may be made occasionally at the option of the builder. Please contact your Sales Consultant for details.



All square footage is approximate. Renderings are artist's conceptions and may vary slightly from the actual home. Homes may be built in reverse of plans shown, depending on site conditions. Minor architectural changes may be made occasionally at the option of the builder. Please contact your Sales Consultant for details.



All square footage is approximate. Renderings are artist's conceptions and may vary slightly from the actual home. Homes may be built in reverse of plans shown, depending on site conditions. Minor architectural changes may be made occasionally at the option of the builder. Please contact your Sales Consultant for details.