



Priced From

\$176,990

4 Exterior Styles Available

 1,428+ Sq. Ft.

 3 Bedrooms

 2 Bathrooms

If you're looking for Southern charm and comfortable living, the Southport is the perfect fit! This beautiful plan was designed with you in mind whether you're relaxing at the end of the day or gathering with family and loved ones for an evening of fun and games. There are 3 bedrooms and 2 bathrooms throughout this cozy floor plan. The heart of the home is sure to be the large eat in kitchen with optional island that opens up to the beautiful great room. This is the perfect space for entertaining, or relaxing and watching the game. The covered front porch is the perfect spot to catch up with conversation on a sunny summer day with a cool pitcher of sweet tea. At the end of the day, retire to the primary suite where you can enjoy a luxurious primary bath and walk-in closet. This floor plan is the perfect fit for your Southern farmhouse dreams and can be customized to fulfill all your needs!



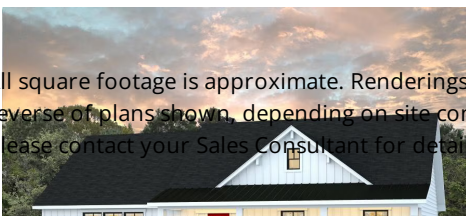
Cabin



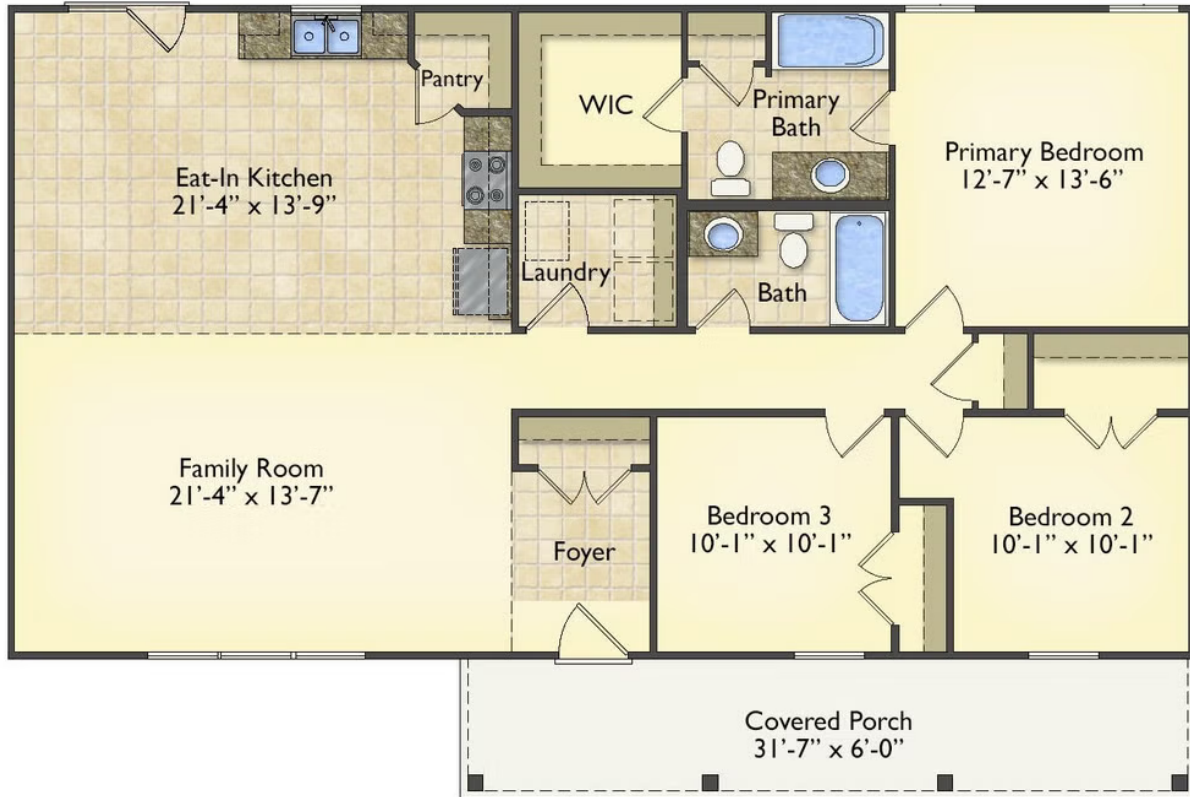
Cape Cod



Classic



All square footage is approximate. Renderings are artist's conceptions and may vary slightly from the actual home. Homes may be built in reverse of plans shown, depending on site conditions. Minor architectural changes may be made occasionally at the option of the builder. Please contact your Sales Consultant for details.



All square footage is approximate. Renderings are artist's conceptions and may vary slightly from the actual home. Homes may be built in reverse of plans shown, depending on site conditions. Minor architectural changes may be made occasionally at the option of the builder. Please contact your Sales Consultant for details.