




Priced From

\$165,990

2 Exterior Styles Available

 1,326+ Sq. Ft.

 3 Bedrooms

 2 Bathrooms

This charming floor plan creates the perfect space for spending the night in and relaxing, or entertaining family and loved ones. The Tynedale offers 3 bedrooms and 2 bathrooms including a primary suite with a stunning bathroom and walk-in closet. The heart of the home is the great room with a vaulted ceiling that opens up to a beautiful kitchen and dining room. Add a covered porch to enjoy summer night grilling out with family and loved ones or create a storage space with the option to add a garage. This floor plan is customizable to meet your needs and fulfill all your dreams.

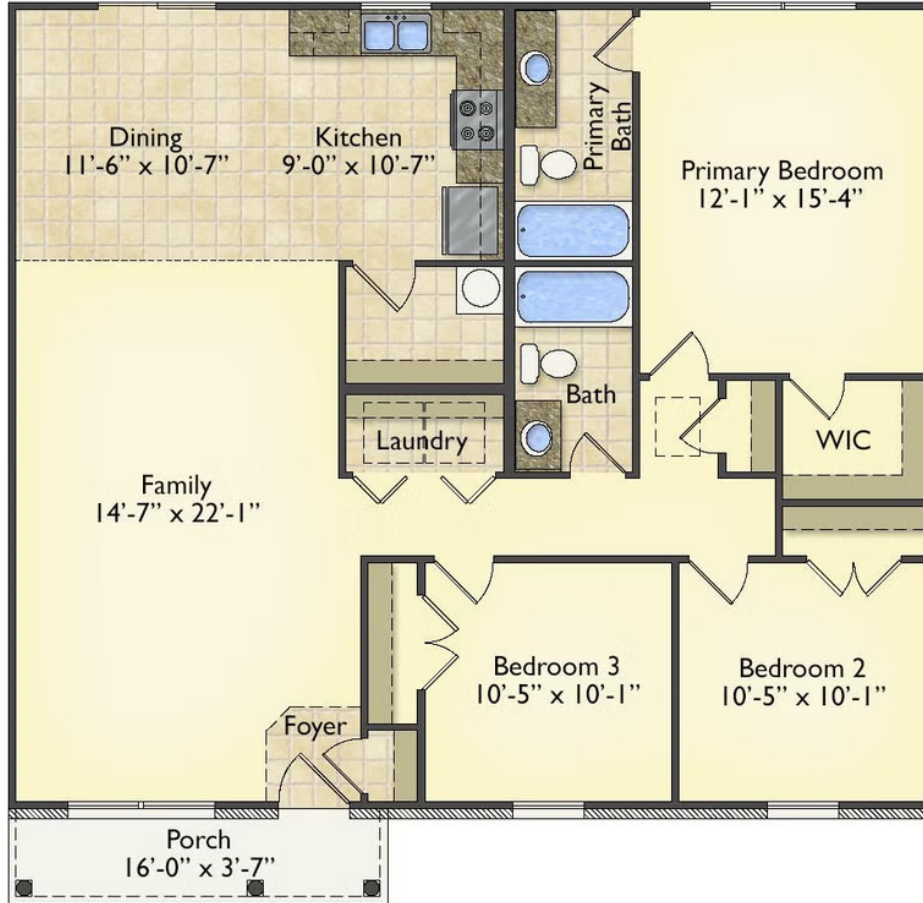


Classic



Craftsman

All square footage is approximate. Renderings are artist's conceptions and may vary slightly from the actual home. Homes may be built in reverse of plans shown, depending on site conditions. Minor architectural changes may be made occasionally at the option of the builder. Please contact your Sales Consultant for details.



All square footage is approximate. Renderings are artist's conceptions and may vary slightly from the actual home. Homes may be built in reverse of plans shown, depending on site conditions. Minor architectural changes may be made occasionally at the option of the builder. Please contact your Sales Consultant for details.